



FACULTY OF VETERINARY MEDICINE
approved by EAEVE



Proteomic analysis of *Taenia* spp. excretion/secretion proteins: the search for *Taenia solium*-specific diagnostic antigens

Bjorn Victor

Proefschrift voorgedragen tot het behalen van de graad van
Doctor in de Diergeneeskundige Wetenschappen, 2014

Promotoren:

Prof. Dr. Pierre Dorny

Dr. Sarah Gabriël

Dr. Magnus Palmblad

Vakgroep Virologie, Parasitologie en Immunologie
Faculteit Diergeneeskunde, Universiteit Gent
Salisburylaan 133, B-9820 Merelbeke

“I may not have gone where I intended to go, but I think I have ended up where I needed to be.”

– Douglas Adams, *The Long Dark Tea-Time of the Soul* (1988).

Acknowledgements

text

Table of Contents

List of Figures

List of Tables

CHAPTER 1

General Introduction

text

Taenia solium: An Introduction

2.1 *Taenia solium* taeniasis and cysticercosis

Taenia solium is a tapeworm belonging to the Taeniidae family (??). The adult stage of the worm (?) develops in the upper third section of the small intestine of humans, the only final host, where it causes an infection called taeniasis (??).

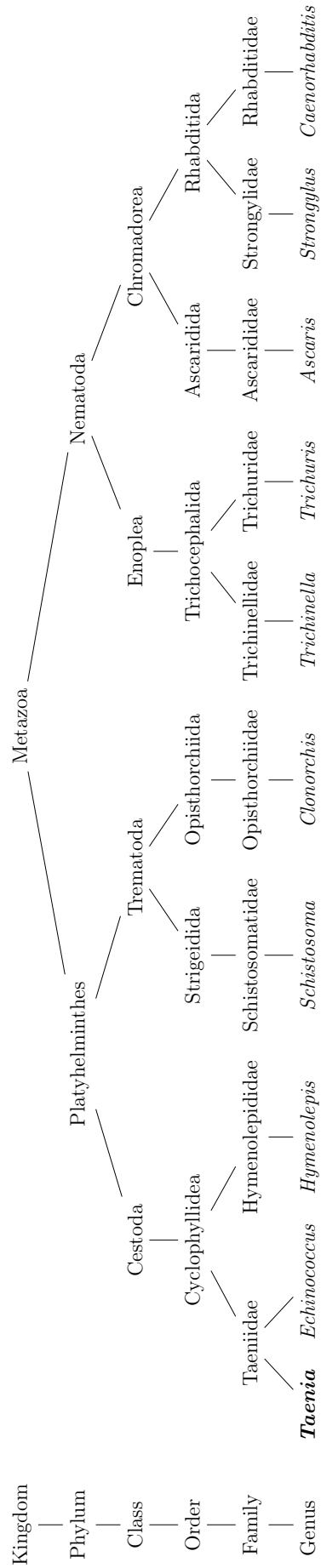


Figure 2.1: text

Intermediate host

Final host

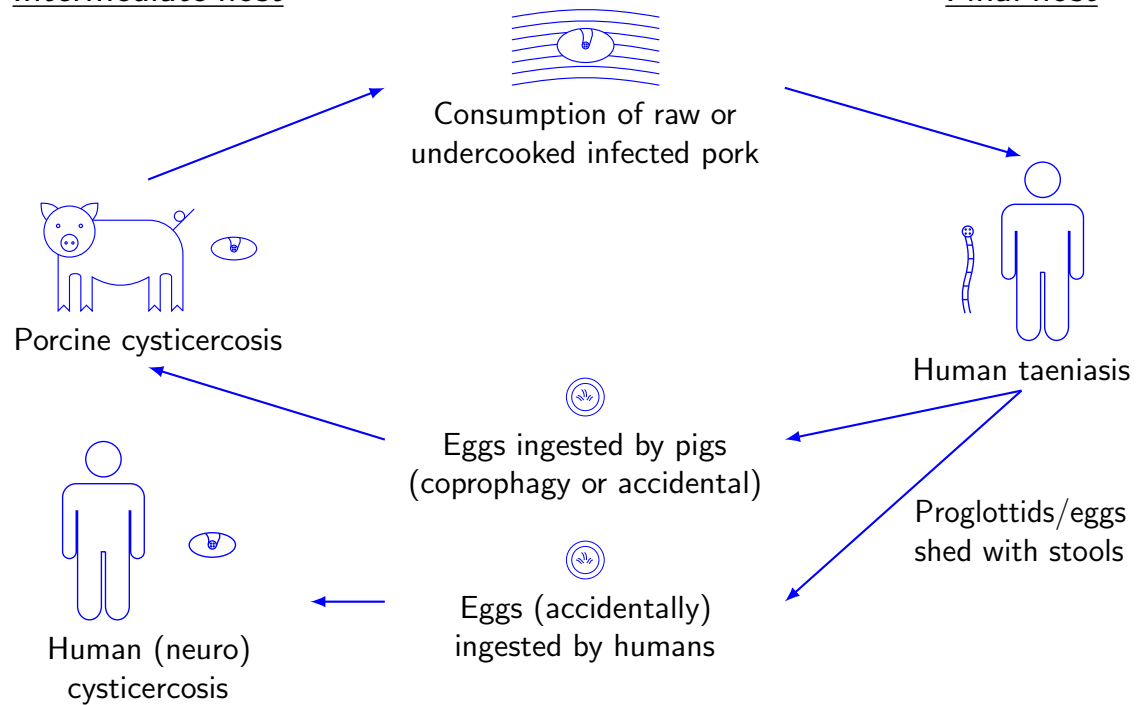


Figure 2.2: text

CHAPTER 3

The Hitchhiker's Guide to Proteomics¹

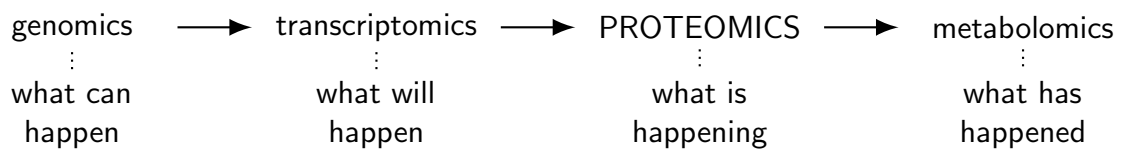


Figure 3.1: text

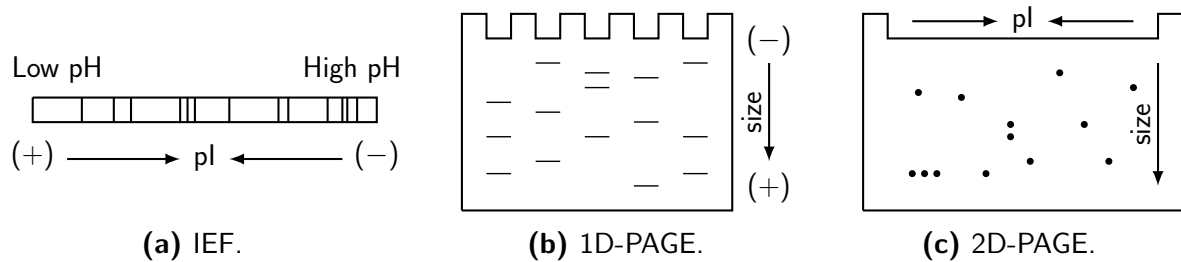


Figure 3.2: text

¹Title adapted from the novel “The Hitchhiker’s Guide to the Galaxy”, written by Douglas Adams and published by Pan Books in 1979.

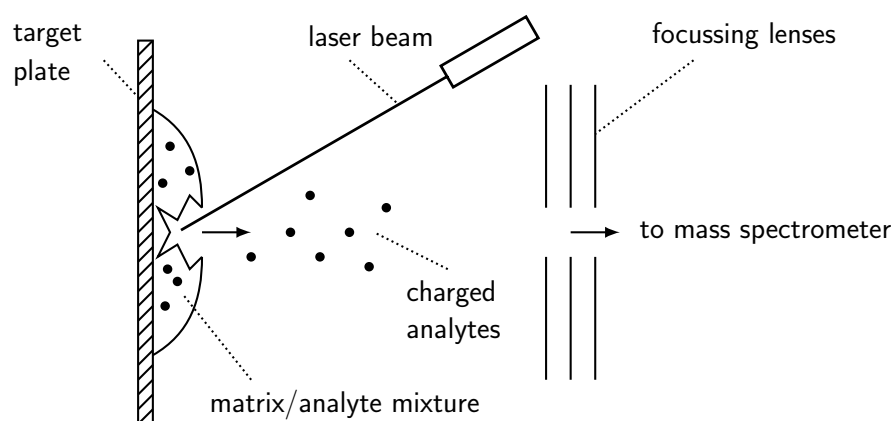


Figure 3.3: text

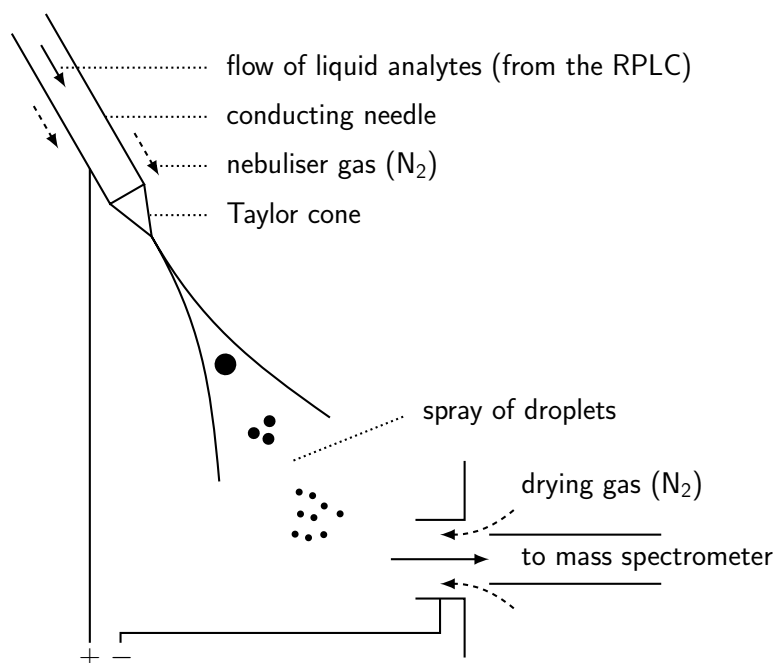


Figure 3.4: text

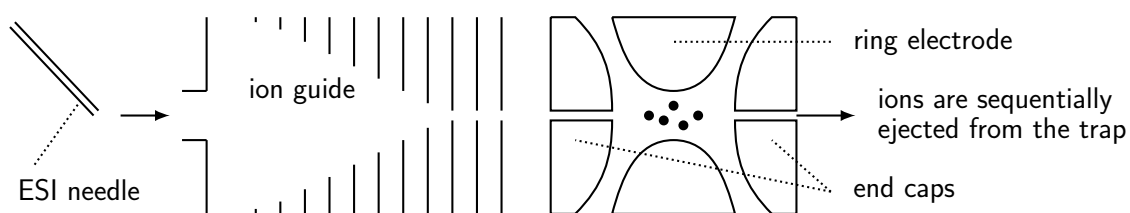


Figure 3.5: text

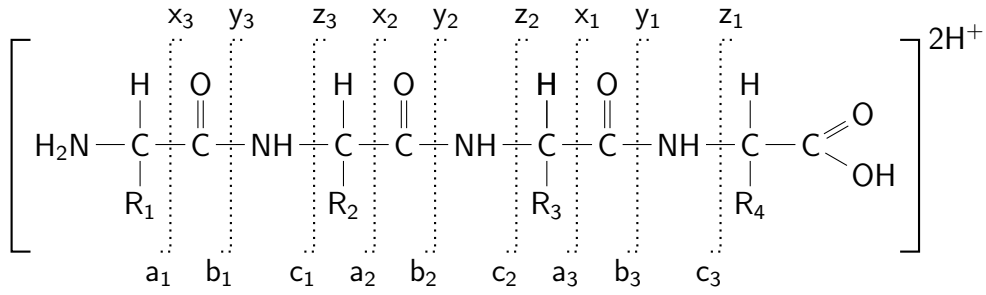


Figure 3.6: text

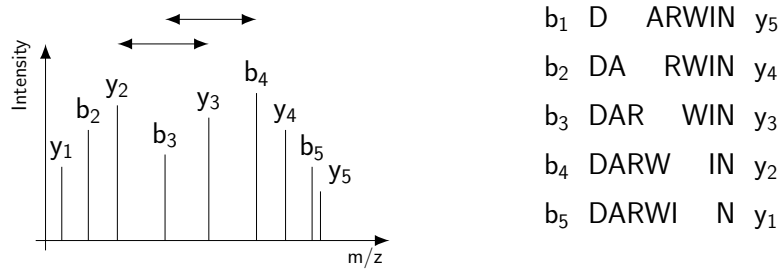


Figure 3.7: text

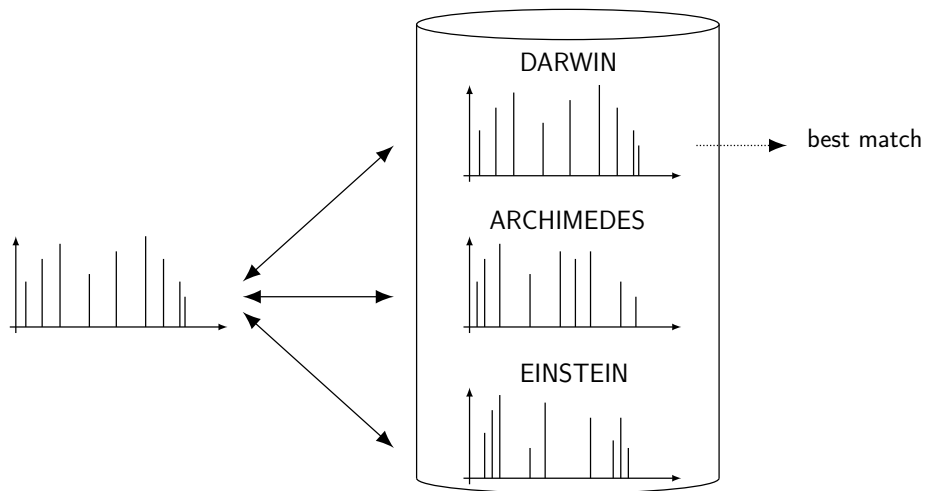


Figure 3.8: text

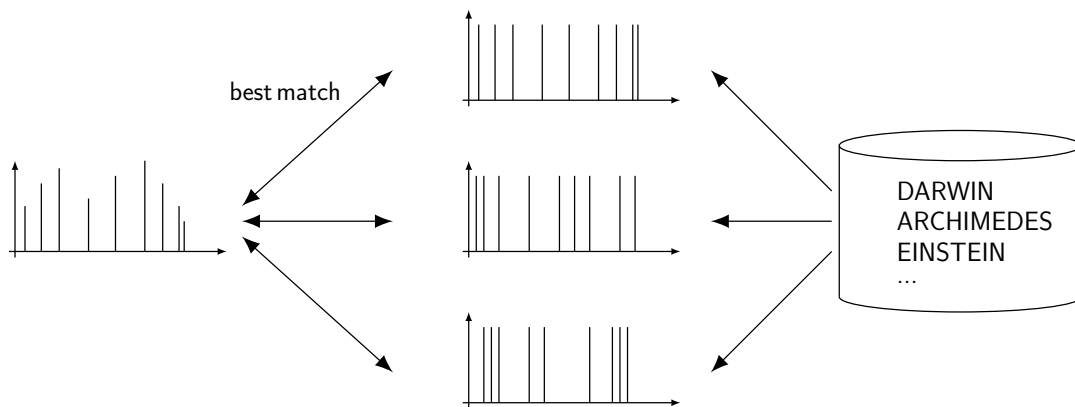


Figure 3.9: text

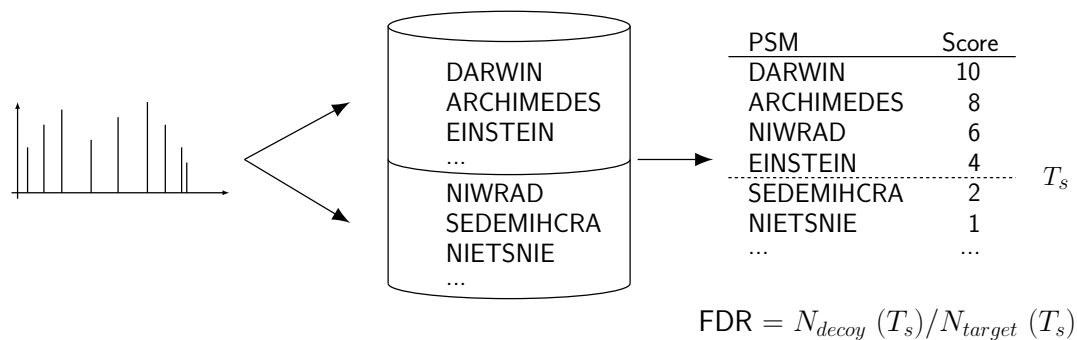


Figure 3.10: text

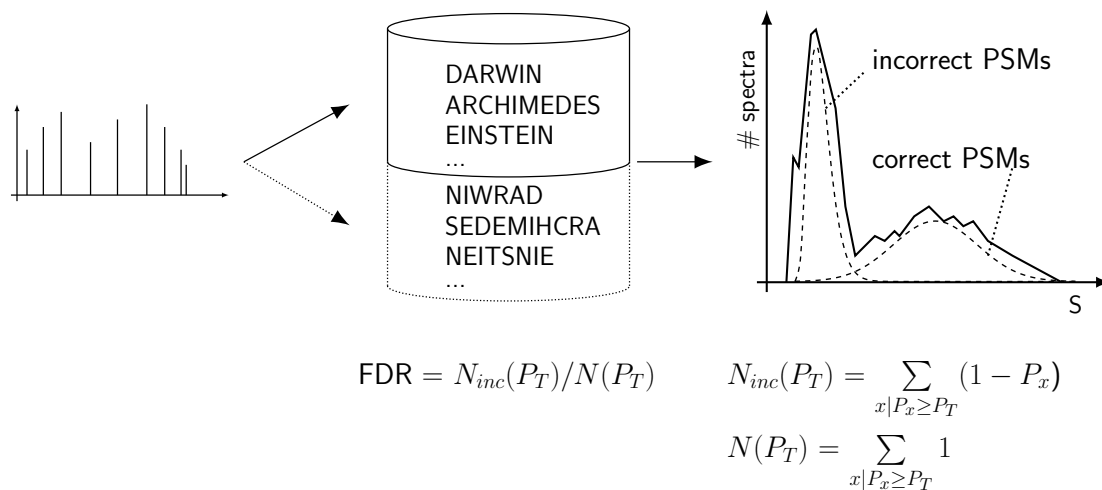


Figure 3.11: text

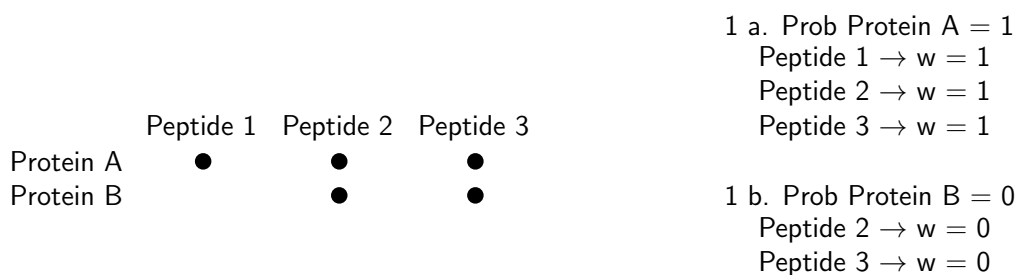


Figure 3.12: text

CHAPTER 4

Rationale and Objectives

text

CHAPTER 5

Partially Sequenced Organisms, Decoy Searches and False Discovery Rates

Abstract: text

Adapted from:

Victor, B., Gabriël, S., Kanobana, K., Mostovenko, E., Polman, K., Dorny, P., Deelder, A. M., and Palmblad, M. Partially Sequenced Organisms, Decoy Searches and False Discovery Rates. *Journal of Proteome Research* 11, 3 (2012), 1991–1995.

text

CHAPTER 6

Proteomic Analysis of *Taenia solium* Metacestode Excretion/Secretion Proteins

Abstract: text

Adapted from:

Victor, B., Kanobana, K., Gabriël, S., Polman, K., Deckers, N., Dorny, P., Deelder, A. M., and Palmblad, M. Proteomic Analysis of *Taenia solium* Metacestode Excretion/Secretion Proteins. *Proteomics* 12, 11 (2012), 1860–1869.

text

CHAPTER 7

Use of Expressed Sequence Tags for the Identification of *Taenia solium* Metacestode Excretion/Secretion Proteins

Abstract: text

Adapted from:

Victor, B., Dorny, P., Kanobana, K., Polman, K., Lindh, J., Deelder, A. M., Palmblad, M., and Gabriël, S. Use of Expressed Sequence Tags as an Alternative Approach for the Identification of *Taenia solium* Metacestode Excretion/Secretion Proteins. *BMC Research Notes* 6, 1 (2013), 224.

text

CHAPTER 8

The Search for Differential Proteins

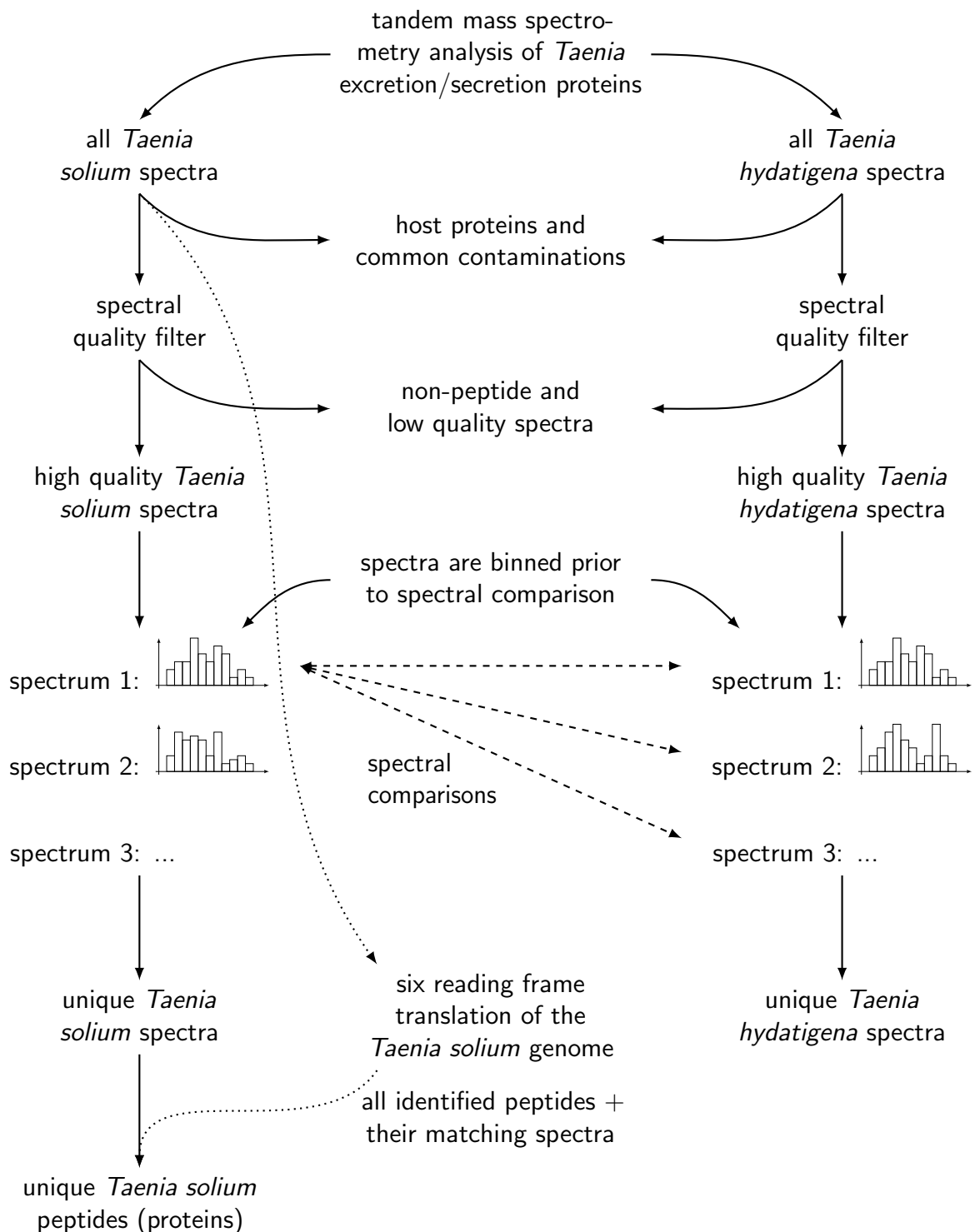


Figure 8.1: text

CHAPTER 9

General Discussion

text

CHAPTER 10

Bibliography

CHAPTER 11

Summary

CHAPTER 12

Samenvatting

A

Appendix
